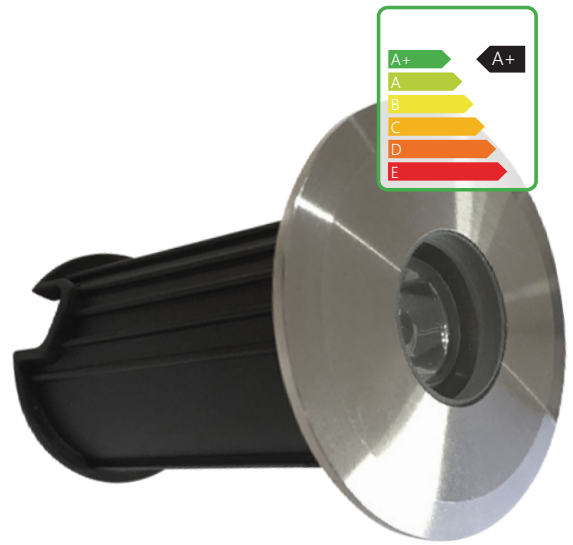


1W IN GROUND LED

STAINLESS STEEL LED GROUND FITTING

The Lightwell 1 Watt contemporary stainless steel recessed ground fitting is both stylish and practical. With an output of 120 Lumens and an IP rating of IP68, these lights are best suited to driveways, patios and decking areas. The tempered clear glass optical lens is 8mm thick and operates at ±90%. Complete with a 1 Watt LED bulb and pre-wired with a 0.5m cable.

- ✓ Stainless Steel Finish
- ✓ IP68 for indoor or outdoor use
- ✓ 1W CREE LED bulb included
- ✓ Colour temperature - NW 4000K
- ✓ Environmentally friendly: no mercury or hazardous substances



Application

Driveways, Patios, Decking,
Domestic & Commercial Outdoor or indoor lights

PRODUCT SPECIFICATION

SKU	Power	Kelvin	Colour	Lumens	Dimensions	Cutout	Beam	IP	Input	Dimmable
IG-SA12V-NWND	1W	4000K	Natural White	120	ø 62*83mm	50mm	60°	IP68	AC/DC12V	X

ATTRIBUTES

Wattage:	1W
Power Factor:	>0.93
Input Voltage:	AC/DC12V
Beam angle:	60°
Colour Temperature:	4000K
IP Rating:	IP68
CRI:	>80 Ra
Dimmable:	No
LED Type:	CREE COB
Operating Temperature:	-30° ~ 50°
Frequency:	50/60Hz

